

KINETIC[®] TRAVEL TIME

ACTIVE AND HISTORICAL JOURNEY TIMES



OVERVIEW

Kinetic Travel Time provides comprehensive historical and real-time traffic data, supporting transportation planners and consultants in optimizing traffic flow, capacity, and signal timing.

Kinetic Travel Time can ingest data from INRIX, Bluetooth devices, or vehicle detectors to calculate travel times based on INRIX algorithms and/or the Q-Free travel time engine. For Kinetic Mobility platform users, this integration delivers faster, more accurate results due to real-time situational awareness across the entire traffic network.

Travel time segments are visually represented on the main map, offering an intuitive and easily accessible view of traffic conditions.

Ingesting travel time into the Kinetic Mobility platform and complimentary modules provides a more comprehensive approach to highway and urban mobility and safety.

BENEFITS

- Leverage detailed travel time data to make informed decisions, optimize traffic flow, and reduce congestion
- Provide accurate and timely travel information to the public, enhancing the travel experience and promoting safer journeys
- Detect and respond to traffic anomalies in real time, minimizing disruptions and maintaining smooth traffic operations



Reliable
travel time
calculations



Proactive
incident
detection



Share data via
511 system and
road signs

STANDARD FEATURES

- Calculate current travel times using INRIX, Q-Free's proprietary travel time engine, or a combination of both
- Collaborate and analyze a variety of travel time data
- View travel times on system-wide map
- Automatic anomaly detection based on user-defined thresholds
- Standard data format for sharing travel time information with the public (e.g., 511 systems or DMS)
- Filter segments based on travel time, location, delay, or confidence
- Associate travel times with events
- Maintain historical database and activity log

REAL-TIME DATA INTEGRATION

Capture, record, and analyze a variety of travel time data:

- Travel time – active travel time for road segment
- Reported time – default time for public
- Smoothed time – algorithm to smooth irregularities and provide consistent travel time graph
- Historical time – derived average of historic travel times
- Delay – current and historical travel time variance

DATA SOURCES

Use any combination of data sources to provide you with the utmost confidence of what's happening in the field.

- INRIX (subscription required)
- Bluetooth sensors
- Vehicle detectors

TRAVEL TIME ENGINE

Q-Free's proprietary travel time engine collects data from various sources and fuses it to generate reliable, normalized travel time information. The engine feeds directly into Kinetic Travel Time to provide a complete travel time aggregation, fusion, visualization, and analytic solution.



www.aicpa.org/soc4so

www.q-free.com | info@q-free.com

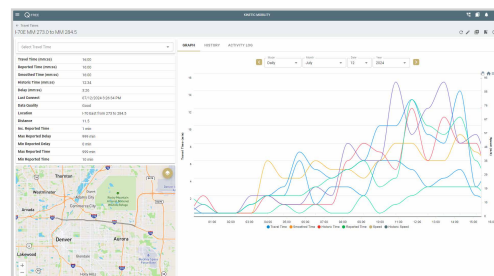
Product specifications may change at any time without notice and may not be available in all markets.
Copyright © 2024 Q-Free. All rights reserved. Revised 17 Jul 2024.

KINETIC® MOBILITY

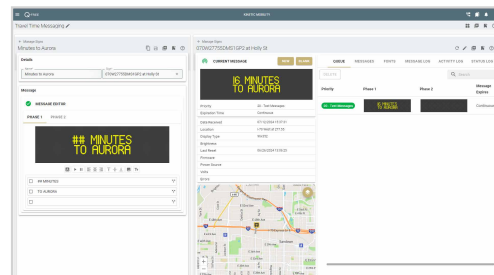
Unify your traffic management data, tools, and teams with Kinetic Mobility.

Kinetic Mobility excels in signal and freeway operations, breaking down operational barriers for unprecedented coordination. Its modular design adapts to your needs, reducing congestion, optimizing traffic flow, and enhancing road safety.

Contact us to learn more about our unified approach to traffic management.



Travel time segment



Sign control and messaging

Index	Segment	Location	Date Acquired	Travel Time (sec)	Expected Time (sec)	Delay Time (sec)	Other (sec)	Confidence	Speed	Quality
1	CHS0001 Intersecting Gateway Blvd	1000 North Hwy 111 to S	2024-07-10 10:00:00	300	300	0.00	0.00	0.7		
2	CHS0002 Highway 101 to Highway 102	170 East Hwy 101 to 102	2024-07-10 10:00:00	300	300	0.00	0.00	0.8		
3	CHS0003 Highway 101 to Highway 102	170 East Hwy 101 to 102	2024-07-10 10:00:00	400	400	0.00	0.00	0.9		
4	CHS0004 Highway 101 to Highway 102	170 East Hwy 101 to 102	2024-07-10 10:00:00	200	200	0.00	0.00	0.9		
5	CHS0005 Highway 101 to Highway 102	170 East Hwy 101 to 102	2024-07-10 10:00:00	300	300	0.00	0.00	0.9		
6	CHS0006 Highway 101 to Highway 102	170 East Hwy 101 to 102	2024-07-10 10:00:00	300	300	0.00	0.00	0.9		
7	CHS0007 Highway 101 to Highway 102	170 East Hwy 101 to 102	2024-07-10 10:00:00	300	300	0.00	0.00	0.9		
8	CHS0008 Highway 101 to Highway 102	170 East Hwy 101 to 102	2024-07-10 10:00:00	300	300	0.00	0.00	0.9		
9	CHS0009 Highway 101 to Highway 102	170 East Hwy 101 to 102	2024-07-10 10:00:00	300	300	0.00	0.00	0.9		
10	CHS0010 Highway 101 to Highway 102	170 East Hwy 101 to 102	2024-07-10 10:00:00	300	300	0.00	0.00	0.9		

Filterable list view

