

# KINETIC<sup>®</sup> CORRIDORS

UNIFIED CORRIDOR MANAGEMENT ACROSS FREEWAYS AND ARTERIALS



## OVERVIEW

Kinetic<sup>®</sup> Corridors is an integrated corridor management software that maximizes capacity of existing infrastructure and improves operational response times, creating more reliable and safer roadways while lowering emissions.

Kinetic Corridors uses advanced algorithms and highly configurable rules to ingest and analyze data to detect unsafe or inefficient conditions and respond to them automatically.

By proactively responding to recurring conditions, Kinetic Corridors frees up operators to focus on more complex scenarios that require adaptive thinking and manual intervention.

Kinetic Corridors can be used for a broad range of applications, such as:

- Queue detection and response
- Speed harmonization
- Weather responsive
- Wrong-way driver detection and response

Part of our landmark Kinetic Mobility platform, Kinetic Corridors leverages Kinetic Mobility's powerful event management tools and the robust functionality of its other modules (such as video, signs, and signals).

## BENEFITS

- Optimize traffic flow, enhance road safety, and reduce congestion-related emissions
- Unify corridor-wide ITS device management and operations through a single user interface
- Dynamically respond to real-time conditions using pre-defined, automated, or recommended plans
- Configure and automate rules to expedite responses with little to no operator input
- Maximize capacity of existing infrastructure and create safer, more reliable, predictable road conditions
- Easily configure corridors using drag-and-drop editor



Unite field devices & data sources



Automated event detection & response



Powerful, easy-to-use interface



Integrate and scale to any size easily

## FEATURES

### CORRIDOR MANAGEMENT

- Build and configure unique corridors to manage, respond to, and prevent traffic events
- Easily add devices, update lane configurations, and assign zones to an existing corridor with industry-leading visual editor
- Manage corridors with little-to-no operator oversight using rules-based, automated responses

### AUTOMATION

- Configure automated rules with simple but powerful condition/action automation specific to user and project needs
- Turn alerts, messages, and events into actionable, automatic responses
- Order, group, and nest automated rules for maximum flexibility and functionality

### USER INTERFACE

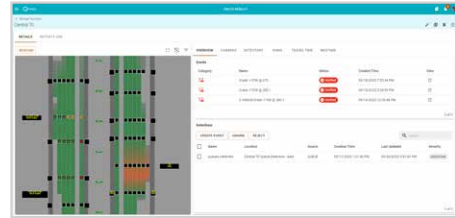
- Dynamic user interface features an accurate visual representation of the corridor layout
- Intuitive point-and-click map to select, view, or manually change corridor field devices

### INTEGRATION

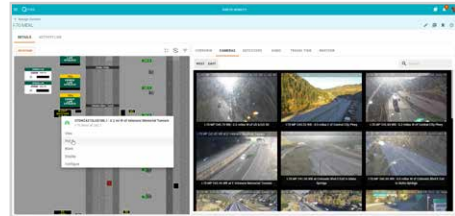
- Built on the powerful and flexible Kinetic Mobility platform that integrates fully into any traffic ecosystem
- Harness the full functionality of embedded Kinetic Mobility modules including Signs, Signals, Events, and Video
- Easily add devices, licenses, and more to build a custom corridor that fits any project scope

## FLEXIBLE DEPLOYMENT OPTIONS

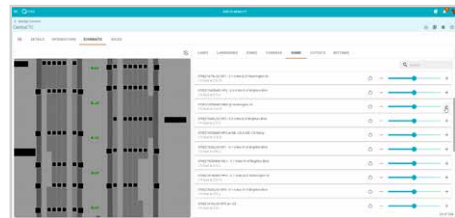
- On-premises or cloud-hosting
- Traditional or SaaS licensing



Quickly access corridor operations



Monitor video feeds as you manage your corridor



Build and customize your corridor with ease

## KINETIC® MOBILITY

Bring your traffic management data, tools, and teams together with Kinetic Mobility.

Transcending operational boundaries, the platform keeps your data safe and secure while allowing you to collaborate on common goals across local, intercity, and regional applications.

Make better decisions faster.

Contact us today to learn about our holistic approach to managing the ever changing mobility landscape.

## PLATFORM FEATURES

Core functions across Kinetic Mobility applications

|                     | <i>Features</i>   | <i>Base standards/protocols</i>   |
|---------------------|---|---|
| Core functions      | <ul style="list-style-type: none"> <li>Central map and Entity Drawer</li> <li>Custom views (location, zoom level, layer selection)</li> <li>User-configurable dashboards</li> <li>Bookmarks</li> <li>System-wide Search</li> <li>In-app help and documentation</li> </ul> | <ul style="list-style-type: none"> <li>Supported basemaps: Bing, ESRI, HERE, MapBox, and OpenStreetMaps</li> <li>Configurable layers/overlays: GeoJSON, XYZ, Quad-Key, and WMS</li> </ul>   |
| Access control      | <ul style="list-style-type: none"> <li>Single sign-on (SSO)</li> <li>Encrypted user management</li> <li>User profiles, roles, and groups</li> <li>Identity brokering and user federation</li> <li>Role-based security at system, group, and device level</li> </ul>       | <ul style="list-style-type: none"> <li>Supported authentication protocols: OpenID connect, SAML 2.0, OAUTH2, Active directory, AzureAD, Google</li> </ul>   |
| User interface      | <ul style="list-style-type: none"> <li>Light, dark, and custom themes</li> <li>Responsive design</li> </ul>   | <ul style="list-style-type: none"> <li>Material UI – based design specification</li> </ul>  |
| Integration hub     | <ul style="list-style-type: none"> <li>Device creation &amp; deletion</li> <li>Device groups</li> <li>CAD Integration</li> <li>External system integration</li> </ul>   | <ul style="list-style-type: none"> <li>Camera Control: NTCIP 1205, ONVIF, and 13 proprietary protocols</li> <li>Video Streaming: RTSP, HLS, DASH, MJPEG and WebRTC</li> <li>Events: Integration with 20 different CAD vendor systems, Waze, and INRIX</li> <li>Signs: NTCIP 1203 v1, 2, 3 and 16 proprietary protocols</li> </ul> |
| Reports & Analytics | <ul style="list-style-type: none"> <li>Dashboards</li> <li>Import and export</li> <li>Custom reports</li> </ul>   | <ul style="list-style-type: none"> <li>Export types: csv, Excel, PDF</li> </ul>   |
| Architecture        | <ul style="list-style-type: none"> <li>Modular, plug-in architecture</li> <li>Volume-based licensing</li> <li>Scalable up to thousands of devices and users</li> <li>SaaS or on-premises</li> </ul>   | <ul style="list-style-type: none"> <li>Cloud native deployments: AWS, Azure, GCP</li> </ul>   |



[www.aicpa.org/soc4so](http://www.aicpa.org/soc4so)

[www.q-free.com](http://www.q-free.com) | [info@q-free.com](mailto:info@q-free.com)

