

KINETIC[®] VIDEO

LOW-LATENCY VIDEO DISTRIBUTION, CLIENT DISPLAY, AND LOW-COST VIDEO WALL



OVERVIEW

Kinetic[®] Video is an end-to-end video management system for transportation agencies looking to improve situational awareness and make better decisions faster.

Process high volumes of video feeds, display pre-set or custom scenes, and share feeds with internal and external stakeholders in near real-time with our low-latency Kinetic Video application. Best of all, our plug-n-play mini video wall device allows you to turn any display with an HDMI port into a video wall instantaneously.

The system is capable of managing an enormous amount of visual data from disparate camera manufacturers and sharing that data across the customer network and third parties for improved public safety.

The ultimate transportation management dashboard, Kinetic Video dynamically displays virtually any web-based content for full situational awareness and emergency and incident management.

Built on our landmark Kinetic Mobility platform using a modern tech stack, the system is available as software as a service (SaaS) with a lower cost of entry, making it accessible to agencies of all sizes. Easily scale and integrate other Kinetic applications for a holistic approach to transportation management, including automated event management, sign control, and more.

BENEFITS

- Advance situational awareness and public safety
- See things as they happen with responsive camera controls and low-latency design
- Create pre-set and custom views with drag-and-drop editor
- Share streams securely with the public, first responders, and third parties
- Affordable, scalable solution ideal for agencies large and small
- Compatible with the leading camera standards and protocols
- Software as a service features low upfront costs, no maintenance, and only pay for what you need



REAL-TIME
SITUATIONAL
AWARENESS



ENCRYPTED
ACCESS &
DATA SHARING



USER-
FRIENDLY
DESIGN



KINETIC VIDEO

- Intuitive, user-friendly interface for viewing, controlling, and sharing video feeds
- Create custom scenes and share system wide
- Display pre-set camera groups or individual devices
- Simple, easy-to-use drag and drop editor
- Save unique views and easily switch between views
- Display virtually any web-based data with widgets

VIDEO WALL

- Turn any display with an HDMI connection (e.g. monitor, TV, projector) into a video wall with our low-cost plug-n-play mini video wall device
- Switch between standard video wall layouts
- Render video feeds from multiple vendors in HD
- Access video wall remotely via any web-enabled device

VIDEO DISTRIBUTION

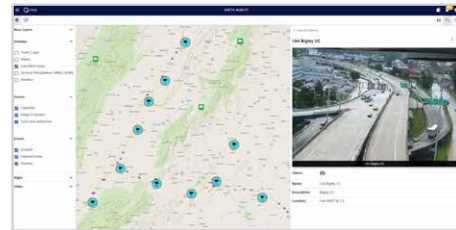
- Process high volumes of video with <200 ms delay
- View video streams from multiple systems and networks
- Share with internal and external stakeholders with no client software requirements or licensing fees
- Quickly cut public feeds

CAMERA CONTROL

- View and access cameras from system map*
- Pan, tilt, and zoom directly from video display
- Configure and schedule auto-home views for individual cameras
- Create schedules by time of day, day of week, etc.
- Store recordings and video snapshots
- User-created camera groups
- Limit access controls by device*
- Easily add devices using Kinetic Integration Hub*
- Integrate with legacy and current devices
- Supports leading standard protocols, e.g., NTCIP and ONVIF



Video wall scene selection



Camera view from main map



Searchable video camera device list

KINETIC®

MOBILITY

Bring your traffic management data, tools, and teams together with Kinetic Mobility.

Transcending operational boundaries, the platform keeps your data safe and secure while allowing you to collaborate on common goals across local, intercity, and regional applications.

Make better decisions faster.

Contact us today to learn about our holistic approach to managing the ever changing mobility landscape.

* Kinetic Mobility core platform functionality

PLATFORM FEATURES

Core functions across Kinetic Mobility applications

	<i>Features</i>	<i>Base standards/protocols</i>
Core functions	<ul style="list-style-type: none"> Central map and Entity Drawer Custom views (location, zoom level, layer selection) User-configurable dashboards Bookmarks System-wide Search In-app help and documentation 	<ul style="list-style-type: none"> Supported basemaps: Bing, ESRI, HERE, MapBox, and OpenStreetMaps Configurable layers/overlays: GeoJSON, XYZ, Quad-Key, and WMS
Access control	<ul style="list-style-type: none"> Single sign-on (SSO) Encrypted user management User profiles, roles, and groups Identity brokering and user federation Role-based security at system, group, and device level 	<ul style="list-style-type: none"> Supported authentication protocols: OpenID connect, SAML 2.0, OAUTH2, Active directory, AzureAD, Google
User interface	<ul style="list-style-type: none"> Light, dark, and custom themes Responsive design 	<ul style="list-style-type: none"> Material UI – based design specification
Integration hub	<ul style="list-style-type: none"> Device creation & deletion Device groups CAD Integration External system integration 	<ul style="list-style-type: none"> Camera Control: NTCIP 1205, ONVIF, and 13 proprietary protocols Video Streaming: RTSP, HLS, DASH, MJPEG and WebRTC
Reports & Analytics	<ul style="list-style-type: none"> Dashboards Import and export Custom reports 	<ul style="list-style-type: none"> Export types: csv, Excel, PDF
Architecture	<ul style="list-style-type: none"> Modular, plug-in architecture Volume-based licensing Scalable up to thousands of devices and users SaaS or on-premises 	<ul style="list-style-type: none"> Cloud native deployments: AWS, Azure, GCP



www.aicpa.org/soc4so

www.q-free.com | info@q-free.com

Product specifications may change at any time without notice and may not be available in all markets.
 Copyright © 2023 Q-Free. All rights reserved. Revised 02 Aug 2023.

