

# KINETIC® SIGNS

INTELLIGENT SIGN CONTROL AND MESSAGING



## OVERVIEW

Kinetic® Signs is a system-wide sign management solution that gives users complete control over their dynamic message signs regardless of vendor. Using an intuitive message editor, users can manage nearly every aspect of the appearance of messages, including formatting, color, font, and priority.

Schedule and post messages individually or simultaneously with our what-you-see-is-what-you-get editor. The editor also validates messages across a variety of sign styles, prompting users to update truncated text.

View signs via the dynamic system map and select directly for quick access to sign controls. You can also view signs in a list view and create sign groups for easy access by region or workflow.

Used in conjunction with other Kinetic Mobility applications, Signs makes it easy to automatically post critical information with commuters, such as weather warnings, travel times, and incident or emergency response management.

Built on our landmark Kinetic Mobility platform using a modern tech stack, the system is available as software as a service (SaaS) with a lower cost of entry, making it accessible to agencies of all sizes. Easily scale and integrate other Kinetic applications for a holistic approach to transportation management, including automated event management, sign control, video, and more.

## BENEFITS

- Improve road safety and efficiency
- Control system-wide signs from a variety of vendors from a single, collaborative platform
- Optimize communication with a predefined dynamic message library
- Create custom messages for unique display types
- Visualize and validate messages in real-time
- Post, queue, and prioritize sign messaging
- Log functions including message and status history
- Software as a service features low upfront costs, no maintenance, and only pay for what you need



COMPLETE  
CONTROL OVER  
SIGN MESSAGES



INTEGRATE  
DEVICES

## CORE FEATURES

- Create custom dashboard views with drag and drop tiles
- Manage signs from map or list view
- Apply filters or use dynamic search function
- Post, queue, and blank individual and/or multiple messages simultaneously
- Supports full, line, and character matrix signs

### DYNAMIC MAP VIEW\*

- View overall system health at a glance
- Launch quick-access device controls
- Create and save custom views

### MESSAGE LIBRARY

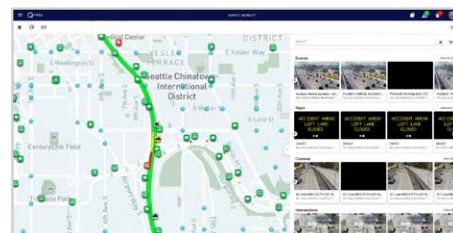
- Create preset messages to post to one or multiple signs
- Override message for selected signs
- Preview messages on various sign sizes before posting
- Prioritize messaging based on message purpose

## DEVICE CONTROL

- Input the details such as location, direction, brightness, and software reset of the sign
- Format message appearance including font, alignment, justification, and color
- Preview messages before posting
- Control phase on/off and timings
- Set message priorities for multiple pieces of information
- Activate message right from editor view
- Easily add devices using Kinetic Integration Hub\*

## ACCESS CONTROL\*

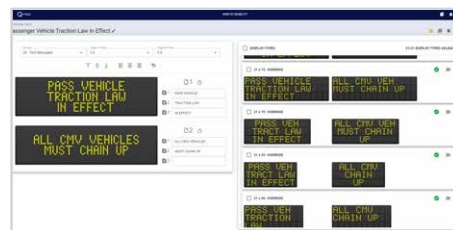
- Granular, configurable user access controls down to the device level
- User profiles, roles, and groups
- Multi-factor authentication



View & manage from interactive system map



Easily view all system signs and message defaults



Post and adjust messages based on sign size and capabilities from a single dashboard

# KINETIC® MOBILITY

Bring your traffic management data, tools, and teams together with Kinetic Mobility.

Transcending operational boundaries, the platform keeps your data safe and secure while allowing you to collaborate on common goals across local, intercity, and regional applications.

Make better decisions faster.

Contact us today to learn about our holistic approach to managing the ever changing mobility landscape.

\* Kinetic Mobility core platform functionality

## PLATFORM FEATURES

Core functions across Kinetic Mobility applications

	Features	Base standards/protocols
Core functions	Central map and Entity Drawer	Supported basemaps: Bing, ESRI, HERE, MapBox, and OpenStreetMaps  Configurable layers/overlays: GeoJSON, XYZ, Quad-Key, and WMS
	Custom views (location, zoom level, layer selection)	
	User-configurable dashboards	
	Bookmarks	
	System-wide Search	
Access control	In-app help and documentation	Supported authentication protocols: OpenID connect, SAML 2.0, OAUTH2, Active directory, AzureAD, Google
	Single sign-on (SSO)	
	Encrypted user management	
	User profiles, roles, and groups	
	Identity brokering and user federation	
User interface	Role-based security at system, group, and device level	Material UI – based design specification
	Light, dark, and custom themes	
Integration hub	Responsive design	Signs: NTCIP 1203 v1, 2, 3 and 16 proprietary protocols
	Device creation & deletion	
	Device groups	
	CAD Integration	
Reports & Analytics	External system integration	Export types: csv, Excel, PDF
	Dashboards	
	Import & export	
Architecture	Custom reports	Cloud native deployments: AWS, Azure, GCP
	Modular, plug-in architecture	
	Volume-based licensing	
	Scalable up to thousands of devices and users	
	SaaS or on-premises	



[www.aicpa.org/soc4so](http://www.aicpa.org/soc4so)

[www.q-free.com](http://www.q-free.com) | [info@q-free.com](mailto:info@q-free.com)

