

# KINETIC® EVENTS

SYSTEM-WIDE EVENT DETECTION, MANAGEMENT, AND RESPONSE



## OVERVIEW

Kinetic® Events is a sophisticated end-to-end decision support system for detecting, managing, and responding to planned and unplanned events. Intuitive workflows and a sophisticated rules-based DSS boost response time and consistency, so you can make better decisions faster.

Events are triggered from a myriad of data sources and assigned a level of confidence and severity by our correlation engine to help prioritize operator response. Regardless of event type, every event is created and monitored through a single, intuitive interface – delivering an improved user experience.

Workflows and forms are pre-populated with available data and easily customized to adhere to your agency's unique tracking, response, and reporting needs. Further expediting response times and consistency, Events sophisticated rules engine allows operators to create custom responses using simple, user-friendly logic trees.

Built on our landmark Kinetic Mobility platform using a modern tech stack, the system is available as software as a service (SaaS) with a lower cost of entry, making it accessible to agencies of all sizes. Easily scale and integrate other Kinetic applications for a holistic approach to transportation management, including automated event management, sign control, video, and more.

## BENEFITS

- Respond to incidents, planned events, adverse weather, and roadside motorists in need of assistance
- Correlate disparate event detection sources for increased confidence and faster verification
- Expedite response time to improve safety
- Control events through a single, intuitive interface
- Improve the user experience and reduce training time
- Share road closures, restrictions, and detours via signs, traveler information systems, and more
- Software as a service features low upfront costs, no maintenance, and only pay for what you need



CENTRAL TOOL  
FOR ALL EVENT  
TYPES



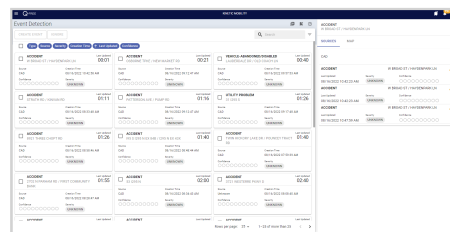
INTUITIVE  
WORK FLOWS



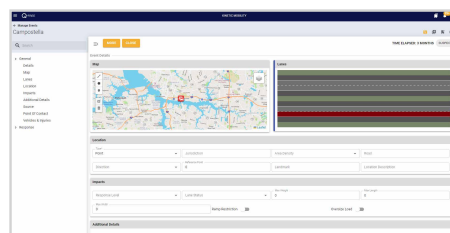
SOPHISTICATED  
DECISION  
SUPPORT

## DETECT

- Automated event detection based on field and social media systems
  - Congestion detection systems (e.g. speed, travel time, queuing)
  - CAD & e911 centers integrations
  - Weather event detection
- Data automatically correlated across sources to assign a level of confidence
- Easily filter results by type, source, severity, creation time, last update, or confidence level



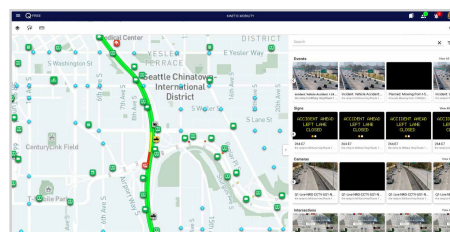
Detected events filterable by type, source, severity



Event creation and response form

## MANAGE

- Customizable data entry details facilitate tracking and reporting of operational metrics
- Create system-wide templates for common events
- Available data is pre-populated to streamline event creation and response
- Configure business rules in the user interface to respond to incidents consistently and accurately
- Link events (i.e. secondary and duplicates) to maintain accurate records/historical logs



System map with item dashboard

## RESPOND

- Recommended responses auto-generated using rules-based decision support system (DSS)
- Create standard responses using flexible, user-friendly logic trees
- Operators maintain full control, ability to customize and approve all responses
- Customize dashboard views with drag and drop widgets for an intuitive, easy-to-use user interface
- Share data with ATIS/511 systems and external shareholders through an open API
- Dispatch motorist assistance vehicles

# KINETIC® MOBILITY

Bring your traffic management data, tools, and teams together with Kinetic Mobility.

Transcending operational boundaries, the platform keeps your data safe and secure while allowing you to collaborate on common goals across local, intercity, and regional applications.

Make better decisions faster.

Contact us today to learn about our holistic approach to managing the ever changing mobility landscape.

## PLATFORM FEATURES

Core functions across Kinetic Mobility applications

	<i>Features</i>	<i>Base standards/protocols</i>
Core functions	Central map and Entity Drawer Custom views (location, zoom level, layer selection) User-configurable dashboards Bookmarks System-wide Search In-app help and documentation	Supported basemaps: Bing, ESRI, HERE, MapBox, and OpenStreetMaps Configurable layers/overlays: GeoJSON, XYZ, Quad-Key, and WMS
Access control	Single sign-on (SSO) Encrypted user management User profiles, roles, and groups Identity brokering and user federation Role-based security at system, group, and device level	Supported authentication protocols: OpenID connect, SAML 2.0, OAUTH2, Active directory, AzureAD, Google
User interface	Light, dark, and custom themes Responsive design	Material UI – based design specification
Integration hub	Device creation & deletion Device groups CAD Integration External system integration	Camera Control: NTCIP 1205, ONVIF, and 13 proprietary protocols Video Streaming: RTSP, HLS, DASH, MJPEG and WebRTC Events: Integration with 20 different CAD vendor systems, Waze, and INRIX Signs: NTCIP 1203 v1, 2, 3 and 16 proprietary protocols
Reports & Analytics	Dashboards Import and export Custom reports	Export types: csv, Excel, PDF
Architecture	Modular, plug-in architecture Volume-based licensing Scalable up to thousands of devices and users SaaS or on-premises	Cloud native deployments: AWS, Azure, GCP



[www.aicpa.org/soc4so](http://www.aicpa.org/soc4so)

[www.q-free.com](http://www.q-free.com) | [info@q-free.com](mailto:info@q-free.com)

Product specifications may change at any time without notice and may not be available in all markets.  
 Copyright © 2023 Q-Free. All rights reserved. Revised 02 Aug 2023.

