

KINETIC[®] COUNTS

CENTRALIZED REPORTING AND ANALYTICS FOR VEHICLES, CYCLES, AND PEDS



OVERVIEW

Kinetic[®] Counts is a sophisticated traffic data collection and analysis tool that equips transportation authorities with valuable insights to make data-driven decisions for their infrastructure planning and investment needs.

Our system map provides an easy means for operators to maintain a birds-eye view of site devices and overall health. Filterable, date-based system reports allow operators to analyze traffic patterns by lane, direction, and class to:

- Analyze traffic patterns
- Quickly identify anomalies
- Correlate weather data
- View/download per vehicle records

Leverage standard or custom reports to track vehicle, cyclist, and pedestrian use to monitor road stress, better plan for infrastructure investments, and request federal funds.

Built on our landmark Kinetic Mobility platform using a modern tech stack, the system is available as software as a service (SaaS) with a lower cost of entry, making it accessible to agencies of all sizes. Easily scale and integrate other Kinetic applications for a holistic approach to transportation management, including automated event management, sign control, video, and more..

BENEFITS

- Analyze usage trends and patterns
- Collect valuable traffic data to measure road stress
- Drive enforcement and investment needs
- Protect roadways through reliable, enforceable data collection
- Better plan for your most vulnerable road users including pedestrians and cyclists
- View system-wide sites, device locations and health, and easily launch quick-access controls from the system map
- Software as a service features low upfront costs, no maintenance, and only pay for what you need



REAL-TIME
SITUATIONAL
AWARENESS



ENCRYPTED
ACCESS &
DATA SHARING



USER-
FRIENDLY
DESIGN

DEVICE CONTROL AND SUPPORT

- View and access all detection devices from system map*
- User-created device groups*
- Limit access controls by device*
- Easily add devices using Kinetic Integration Hub*
- Integrate with legacy and current devices

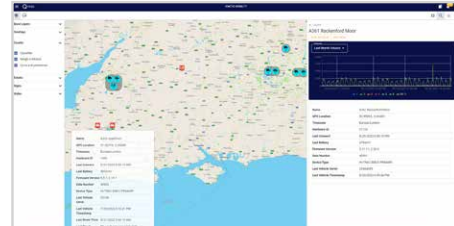
REPORTS

- Easily view data usage trends and history
- Volume, vehicle record, and custom reports including:
 - Volume summary
 - Volume by lane
 - Volume by direction
 - Volume by class
- Create regular reports and email distribution schedules
- Toggle on/off daily weather logs
- Classification of volume per hour/per day, etc. to secure federal funding
- Select custom date ranges to validate and verify data and quickly identify any anomalies
- Analyze daily traffic, average speed

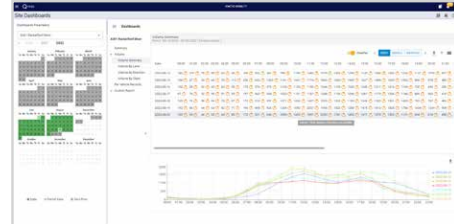
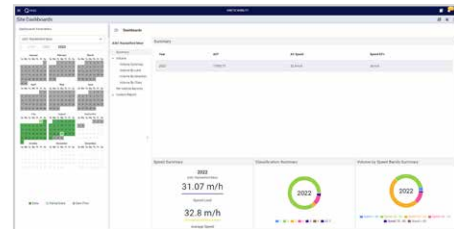
USER-FRIENDLY BY DESIGN

Access key data and reports through an intuitive, user-friendly interface designed by users for users.

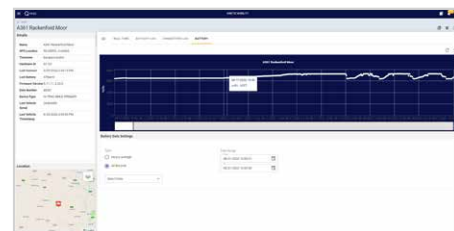
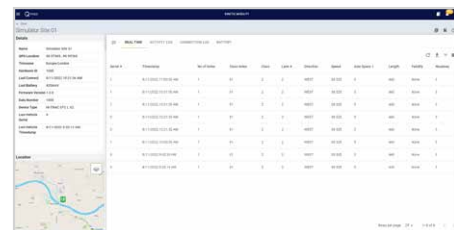
Maintain a bird's-eye view on device location/health and quickly access data through interactive system map



Visualize usage trends & identify anomalies with standard & custom reports



View real-time device data, activity and connection logs, and battery status



KINETIC® MOBILITY

Bring your traffic management data, tools, and teams together with Kinetic Mobility.

Transcending operational boundaries, the platform keeps your data safe and secure while allowing you to collaborate on common goals across local, intercity, and regional applications.

Make better decisions faster.

Contact us today to learn about our holistic approach to managing the ever changing mobility landscape.

** Kinetic Mobility core platform functionality*

PLATFORM FEATURES

Core functions across Kinetic Mobility applications

	<i>Features</i>	<i>Base standards/protocols</i>
Core functions	<ul style="list-style-type: none"> Central map and entity drawer Custom views (location, zoom level, layer selection) User-configurable dashboards Bookmarks System-wide search In-app help and documentation 	<ul style="list-style-type: none"> Supported basemaps: Bing, ESRI, HERE, MapBox, and OpenStreetMaps Configurable layers/overlays: GeoJSON, XYZ, Quad-Key, and WMS
Access control	<ul style="list-style-type: none"> Single sign-on (SSO) Encrypted user management User profiles, roles, and groups Identity brokering and user federation Role-based security at system, group, and device level 	<ul style="list-style-type: none"> Supported authentication protocols: OpenID connect, SAML 2.0, OAUTH2, Active directory, AzureAD, Google
User interface	<ul style="list-style-type: none"> Light, dark, and custom themes Responsive design 	<ul style="list-style-type: none"> Material UI – based design specification
Integration hub	<ul style="list-style-type: none"> Device creation & deletion Device groups CAD Integration External system integration 	<ul style="list-style-type: none"> No UI development for third-party device integration
Reports & analytics	<ul style="list-style-type: none"> Dashboards Import and export Custom reports 	<ul style="list-style-type: none"> Export types: csv, Excel, PDF
Architecture	<ul style="list-style-type: none"> Modular, plug-in architecture Volume-based licensing Scalable up to 2,000 devices per customer node SaaS or on-premises 	<ul style="list-style-type: none"> Cloud native deployments: AWS, Azure, GCP



www.aicpa.org/soc4so

www.q-free.com | info@q-free.com

