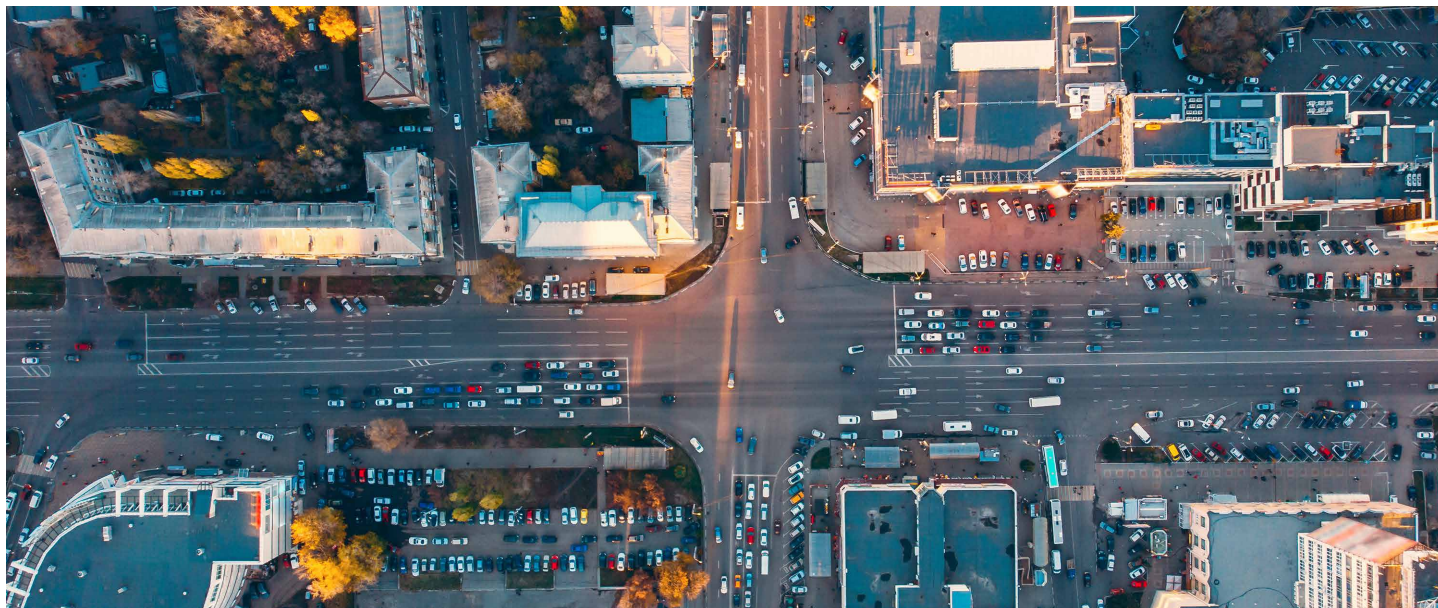


KINETIC[®] SIGNALS

CENTRALIZED TRAFFIC SIGNAL SYSTEM



OVERVIEW

Kinetic[®] Signals is the powerful and forward-thinking centralized traffic signal management module of Kinetic Mobility. It provides all the tools you need to monitor, update, and control your traffic signals as well as robust reporting features including a full suite of ATSPMs.

Reducing the need for multiple central systems, Kinetic Signals seamlessly integrates with Q-Free's MAXTIME controller software and other third-party ATC controllers using NTCIP protocol and/or custom integrations.

Our comprehensive intersection editor displays lane maneuvers, detectors, signals, and controllers on an intuitive map. Maps are easily replicated for applications like adaptive signal control or connected vehicles, boosting efficiency and saving time.

Flexible deployment options include on-premises or cloud-hosted systems. Available software as a service (SaaS) model reduces upfront costs, simplifies maintenance, and lets users pay only for what they need.

Beyond signals, Kinetic Mobility offers a suite of modules—including integrated corridor management, video and sign control, and event management—providing a comprehensive and unified transportation management experience.

BENEFITS

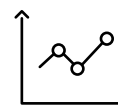
- Intuitively manage and monitor signalized intersections from a interactive system map
- Upload and download databases to controllers, edit drafts offline or send changes directly to live field devices
- Visualize real-time data and usage charts for trend analysis including ATSPMs and Time Space Diagram
- Retain and display system event history and hi-res data for monitoring, reporting, and troubleshooting
- Expand and maintain devices easily with in-app licensing
- Secure your system based on SOC 2 standards, including automated vulnerability scans and available intrusion detection/prevention



Based on
industry-leading
standards



Secure on-
prem or cloud
deployments



ATSPMs included
at no additional
cost

ADVANCED FEATURES

SIGNAL MANAGEMENT

- Schedule software updates to controllers running Q-Free MAXTIME ic
- Real-time split monitoring in coordination and free
- Real-time analysis tools and events monitoring

INTERSECTION CONFIGURATION

- Complete local geometry design
- Customizable signal indications
- Corridor design
- ATSPM configurations supported

INTERSECTION CONTROL

- Scheduler based command/control
- Manual control
- Actions sets

DATABASE EDITOR & MANAGEMENT

- Live database editor with tracking
- Comparison and cloning
- Draft and approved databases
- Storage for supporting documentation

ATMS PLATFORM

- Single sign-on (SSO) and federated authentication
- Configurable maps; no external programs necessary
- Expanded status displays and event monitoring
- Supports multiple browser windows

DASHBOARDS

- Create and configure custom workspaces
- Add any system menu or screen
- Save system-wide and personal views

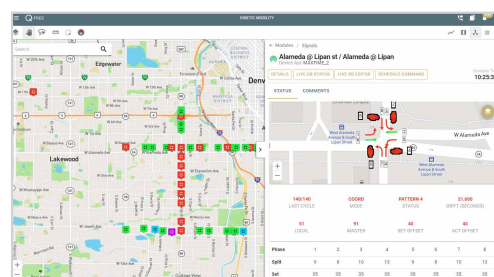


www.aicpa.org/soc4so

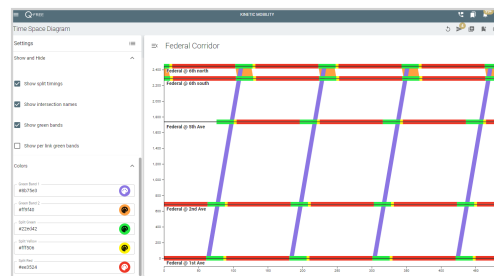
www.q-free.com | info@q-free.com

REPORTING

- High-resolution data collection and reporting
- Built-in ATSPM reporting capabilities
- Interactive Time Space Diagrams with offset editing
- Customized reporting using device event details, communications logs, and external reports
- Full support of NTCIP compliant alarms
- Alarm delivery supported via toast notifications, audio alerts, email, and text



Main map with intersection editor



Time space diagram

KINETIC® MOBILITY

Unify your traffic management data, tools, and teams with Kinetic Mobility.

Built on our modular Kinetic Mobility platform, you can easily scale your Kinetic Signals system to include signs, video, and corridor management, or create a regional management system across freeways and arterials, eliminating the need for patchwork solutions.

Contact us to learn more.

