

# LANE AWARE AIRPORTS

## LANE CLOSURE MANAGEMENT SYSTEM



### OVERVIEW

LaneAware™ Airports is a sophisticated online tool for organizing and managing lane closures due to maintenance, renovation or expansion projects.

Around the world, airports have ambitious growth plans to process more passengers, get more planes flying and make travel more comfortable and efficient – all of which involves major renovation and expansion programs.

Coordinating renovation and construction projects across departments and with routine maintenance and landscaping activities is a daunting, often manual task.

LaneAware Airports simplifies this complex task by enabling registered users to submit work requests involving lane closures online. Much of the lane closure approval process is then automated based on airport policies, avoiding things like peak travel times.

Having a lane management system with a well-defined approval process also helps avoid last minute requests.

Eliminating duplicate requests and potential conflicts, allows projects to be completed faster while minimizing impact to travelers.

### BENEFITS

- Plan ongoing maintenance and capital improvement projects with ease
- Coordinate across departments and contractors
- Minimize impact to operations and travelers
- Make planned lane closure data publicly available through open API
- Integrate with smart cones and portable message signs to verify time and location of work
- Permit users/contractors to submit requests through an online reservation system



CENTRALIZED  
LANE  
MANAGEMENT



SAVE TIME &  
MONEY



MINIMIZE  
IMPACT TO  
TRAVELERS

## FUNCTIONS

Coordinate real-time management of lane closures and produce performance reports to assess work and traffic impacts.

- Alert operators and contractors to start and end of closure requests
- Verify that the contractor is on-site
- Track contractor performance
  - Assess cause and impact of delays
  - Generate road closure performance measures to assess the success of the operation from request to closing

## AUTOMATE APPROVALS

Create automated and manual approvals based on pre-determined set of airport-defined rules.

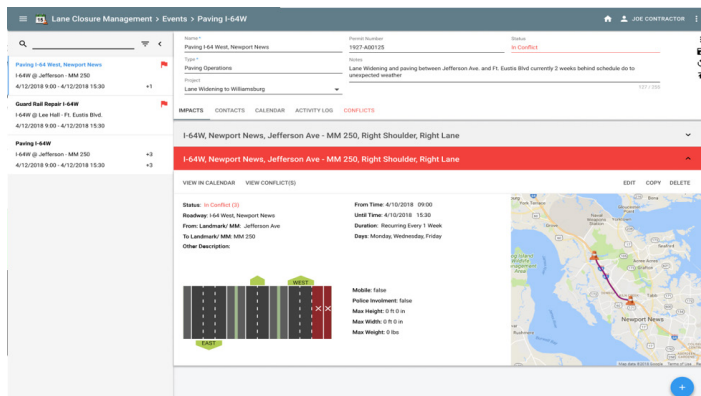
## ADMINISTRATIVE PORTAL

Create and manage system work flows, business policies, and user profiles.

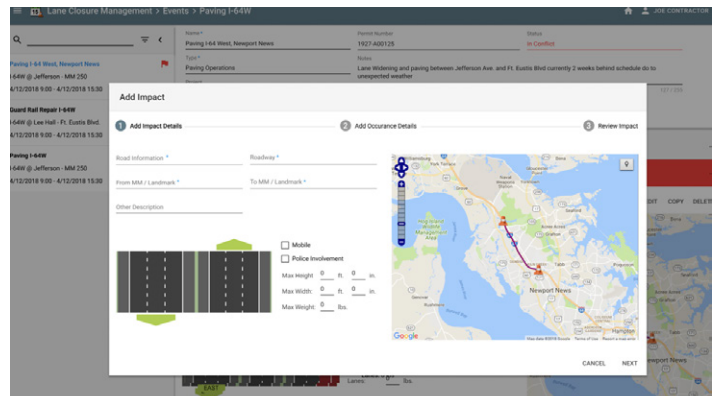
- Blackouts - Calendar-enabled view for establishing dates, times, and locations when lane closures are not permitted.
- Conflicts - Create and manage rules around airport policies and exceptions. Build rules to identify time and space allocation conflicts.
- Roles and Permissions - Establish user roles and permissions including access to add, edit, approve, or delete lane closure requests, generate lane closure reports, as well as create and manage user accounts.

## FEATURES

- Scalable, web-based solution
- Automated or manual approval processes
- Conflict detection and resolution,
- Automatically verify lane closures against established airport rules
- Pre-planning and approval modules
- Track any type of work regardless of need for closures
- Integrate with city's traffic management system to notify of closures or necessary traffic redirects
- Automated reporting



LaneAware web-based GUI



LaneAware makes it easy to add an event or impact

